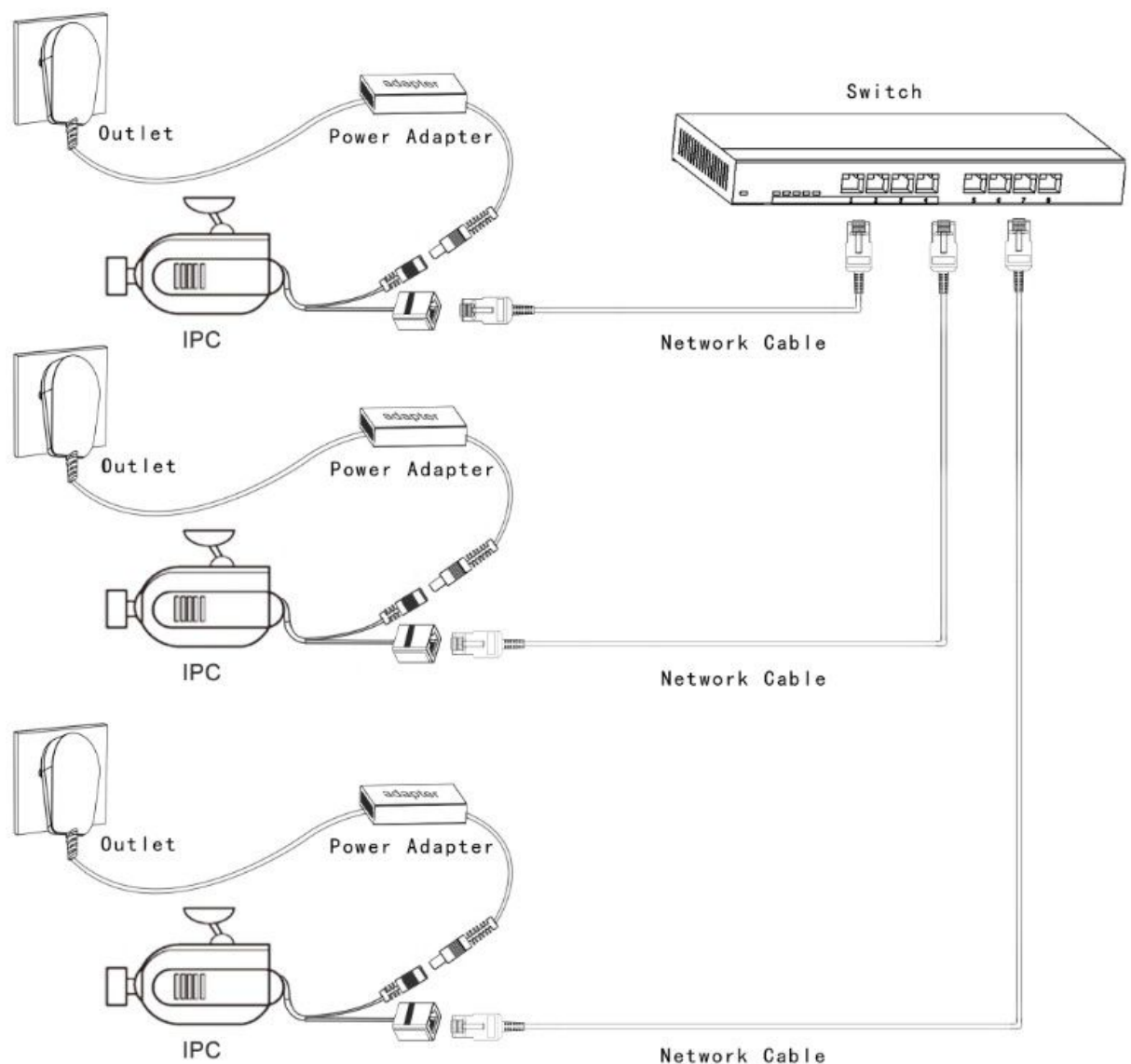


Quick Installation Instructions for IPC

1. Device Connection

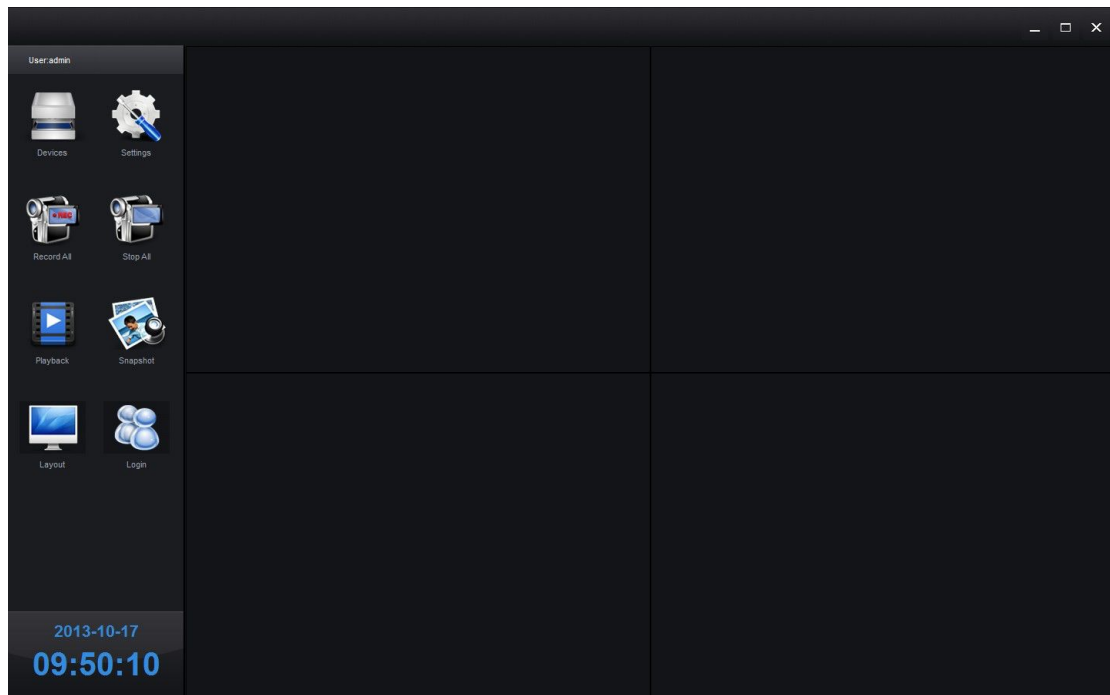


2. Search and connect with IPClient

2.1. Automatically search and connect



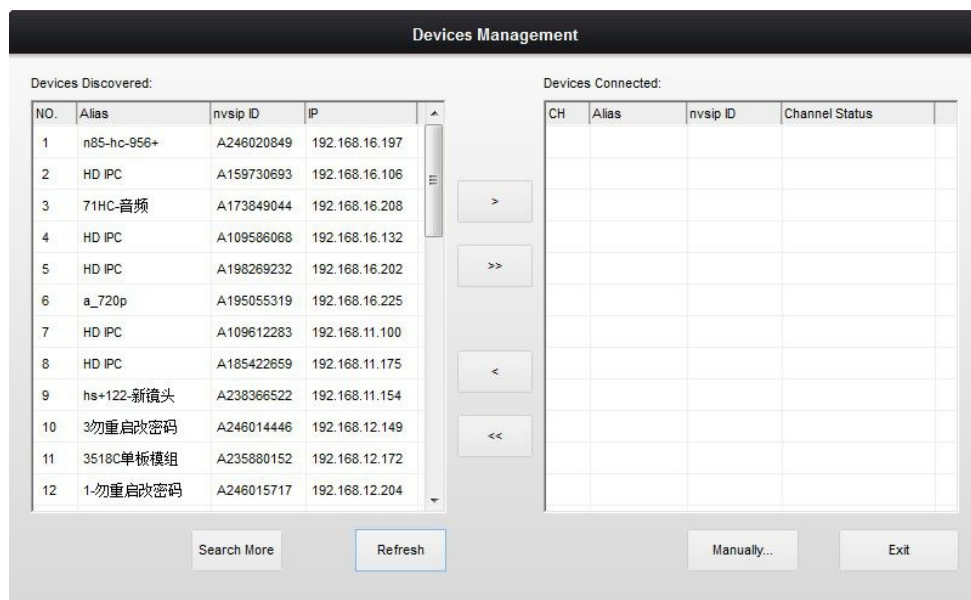
1. Double Click Shortcut **IPClient**, Enter the main interface, Enter the user name and password, the default username is "admin", password is " ".



The main interface

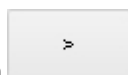


2. Click [Device]



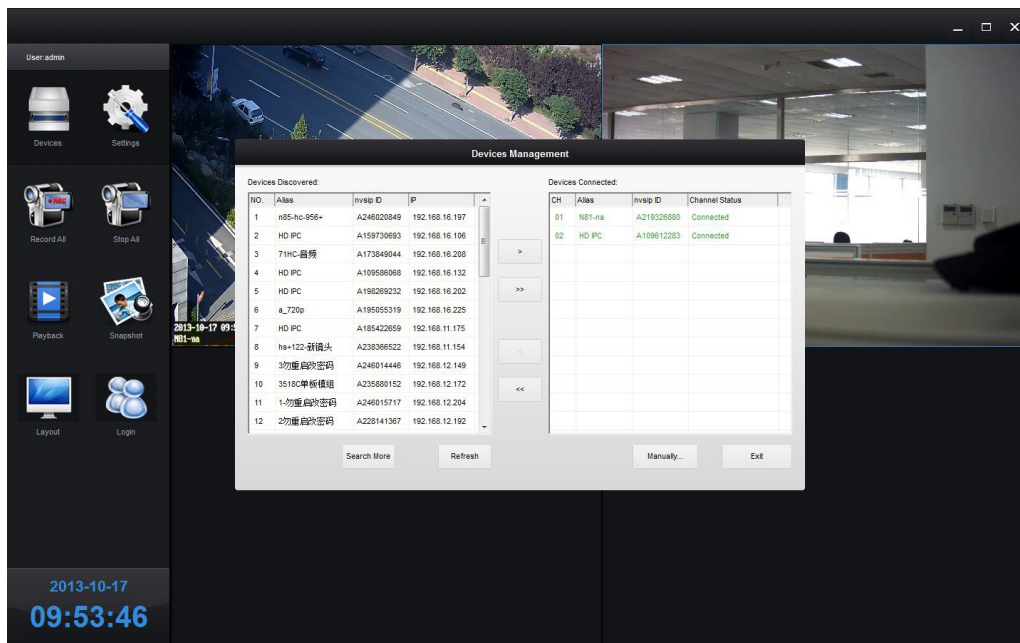
Device Management

3.The left list show the found devices,these devices in the same lan with IPClient,Selected any



device and click the button ,can add this device in the right list,and connected this

device.click the button ,can add all device in the right list and connected.



Refresh

Note:If there are newly devices,then in the device management,click the button [Refresh],can search the newly devices.

2.2. Manually add and connect

1.In [Device Management],click the button[Manually]



Device Config

nvrip ID:

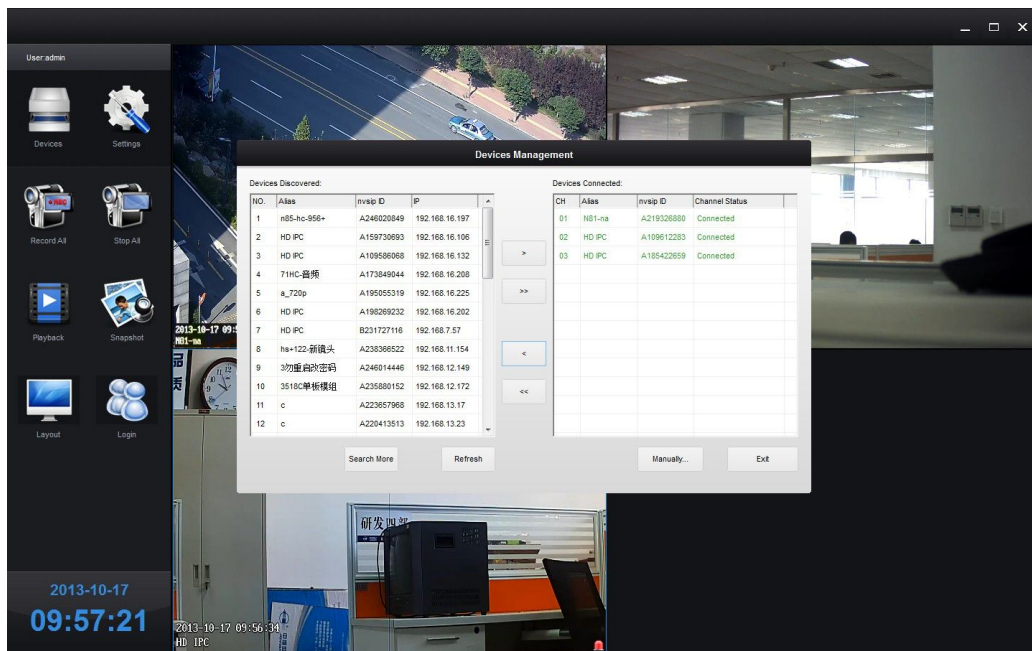
User name:

Password:

Ok
Network...
Exit

Manually

2.Enter the nivsip ID ,Network username and password,click [ok]

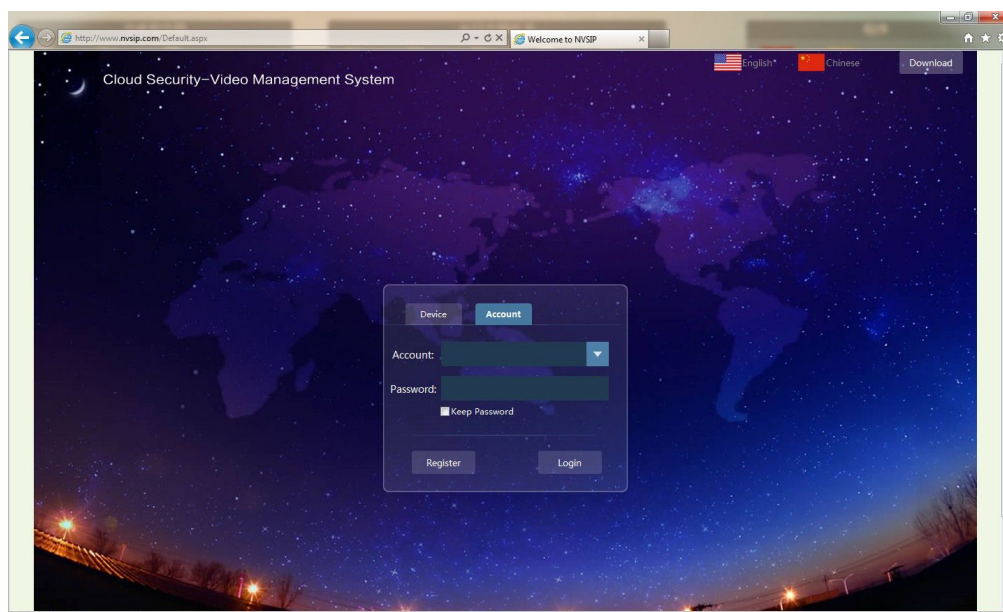


Connected successful

3. Search and connect with IE

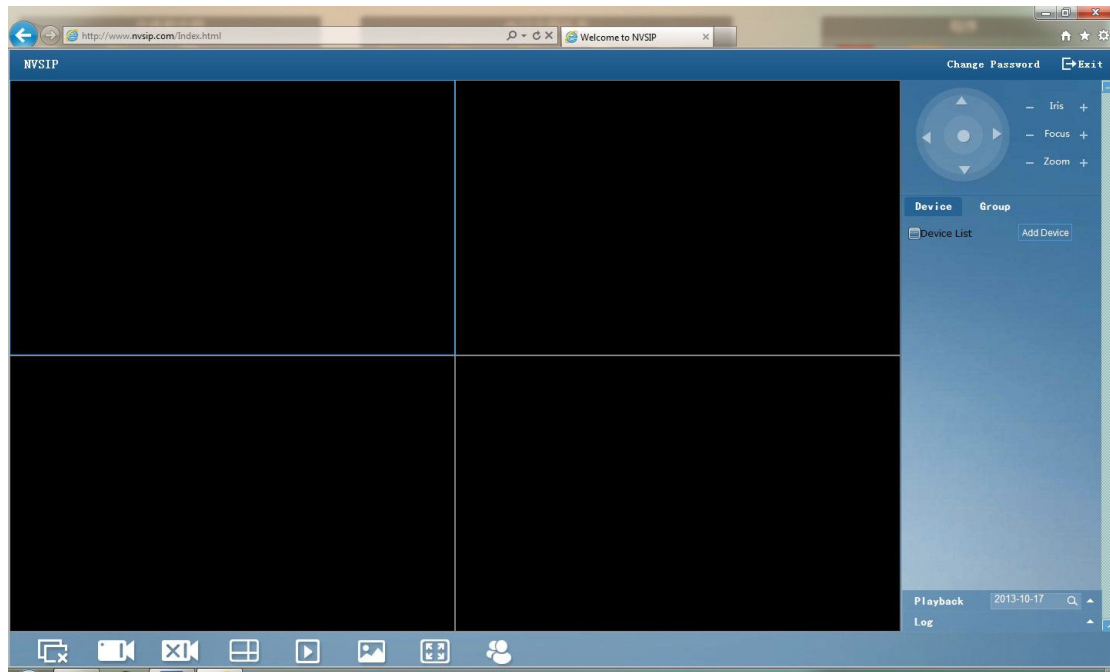
3.1. Login use Account and connect Devices

1. Enter <http://www.nvsp.com> In IE address bar, in the login interface, Enter the Registered Account and password, Click [Login].



The login interface

2. Click the button [Add Device].



Add Device

3. Enter the Device ID, Device name, Network username and password, and enter the channel number. Then click [Save].

Add Device

Device ID:

A219326880

Device Name:

A219326880

Account:

admin

Password:

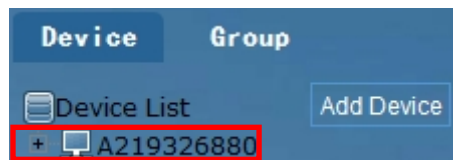
•••••

Channel Qty:

1

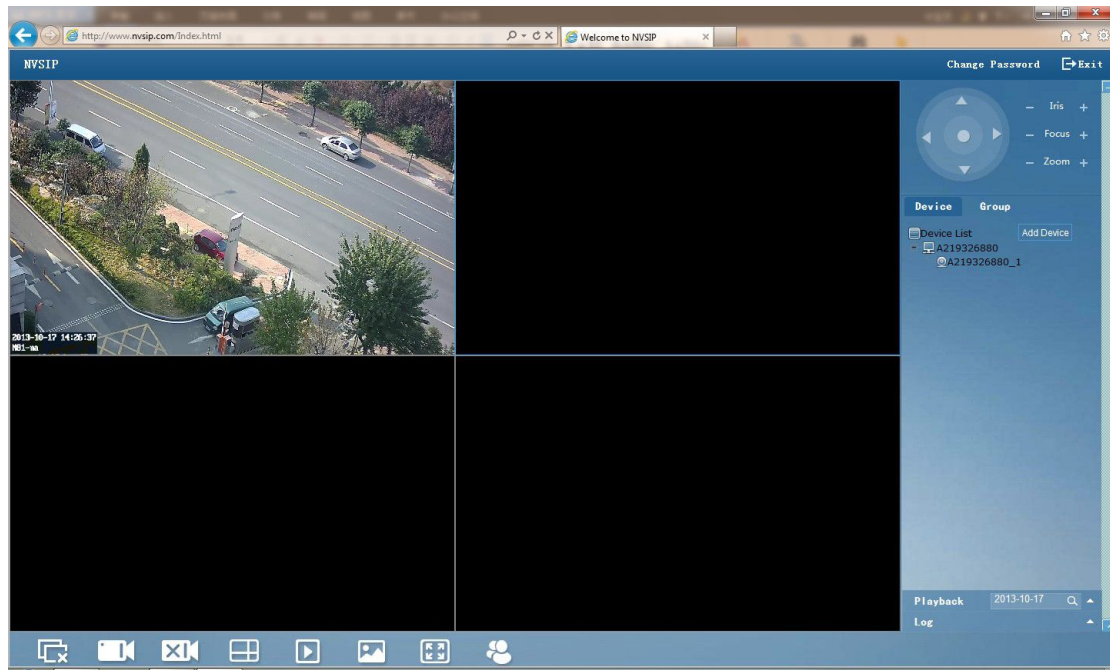
Save

Enter the message



Add Device successful

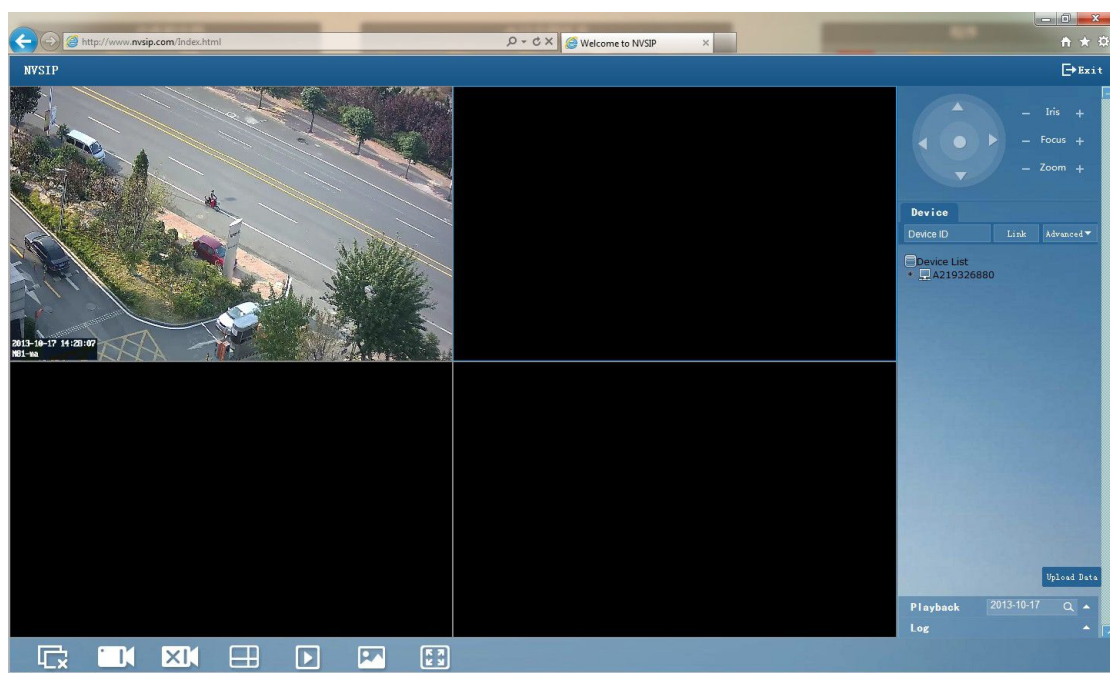
4. Expand Device, Double click the channel, then can connect successful.



Connect successful

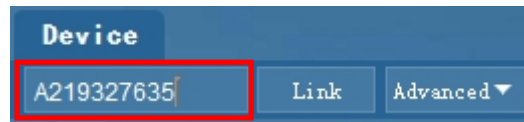
3.2. Login with Device ID and Connect

1. In the login interface, Click the button [Device ID], Enter the Device ID, example A 219326880, enter the network username and password. then click the button [login].



Login successful

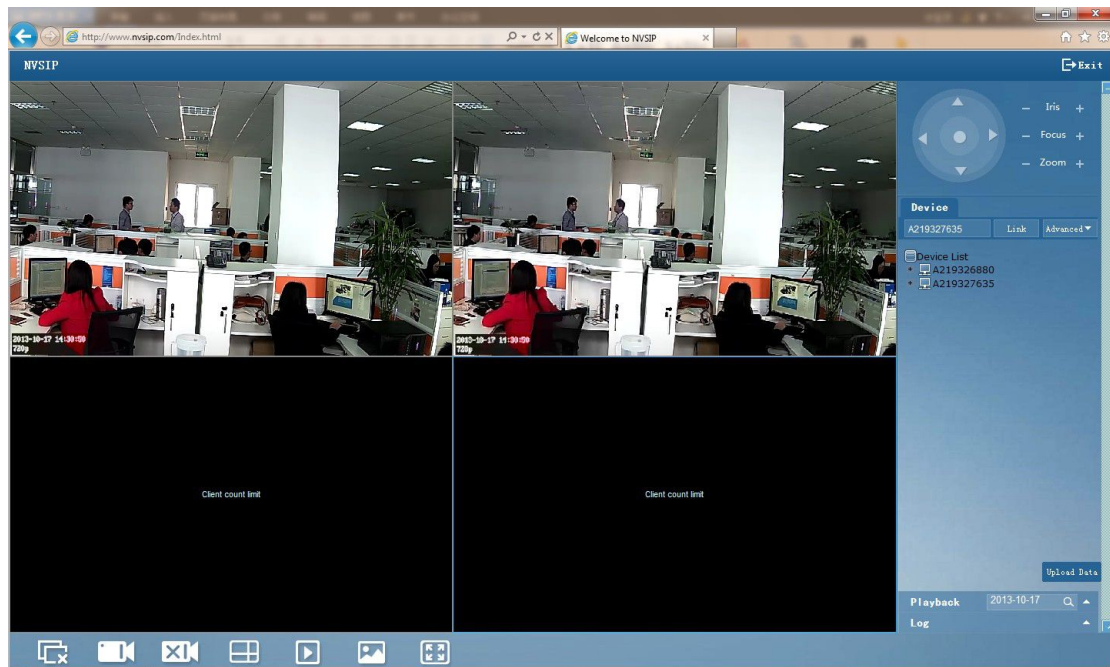
2.After login ,if user want to connect other device,the can enter the Deviec ID in the [Deviec ID] ,Click [Advanced],and enter the network username and password,then click [Link].



Enter other Device ID



Enter the network username and password



Connect successful